



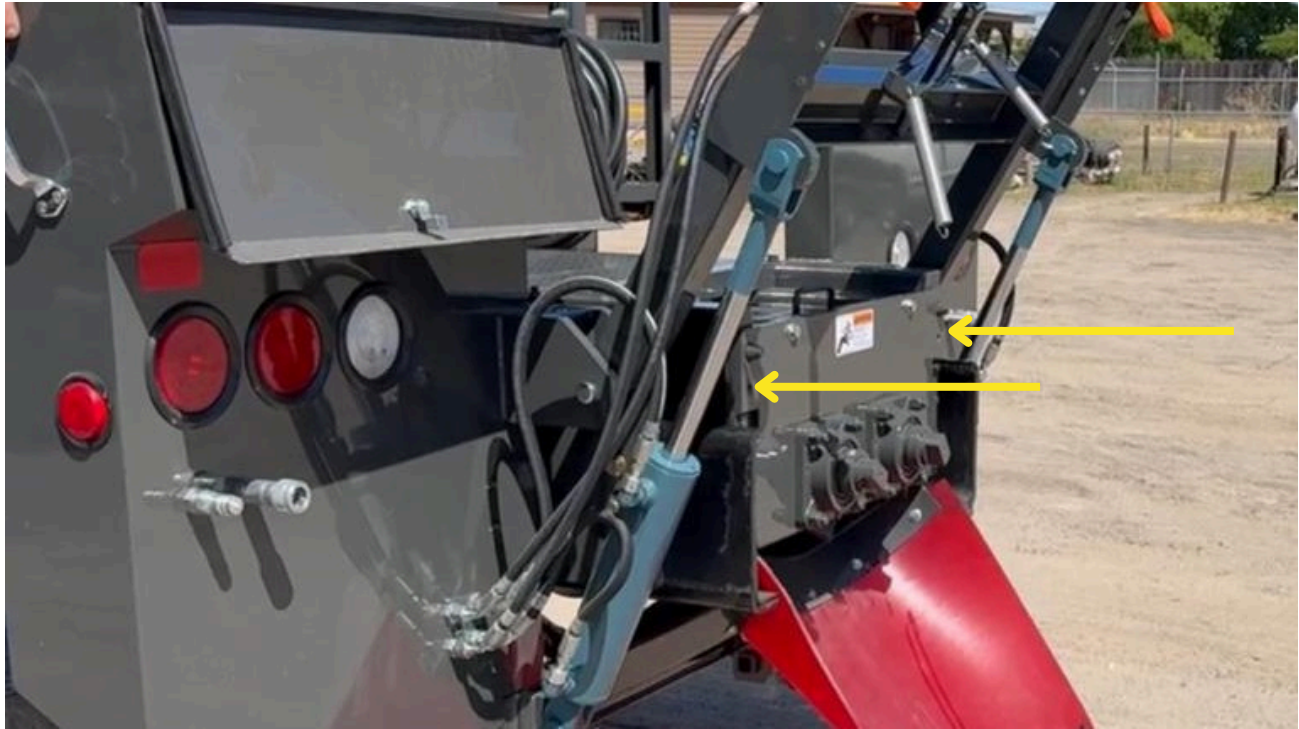
Slide Out Pugmill Operations

Every week, the shafts and paddles should be inspected for slurry build up and the paddles checked for wear.

Buildup removal can easily be removed by following these steps:

- Remove the pugmill cover and inlet hopper from the pugmill.
- Remove lock from pugmill cylinder valve handle and move the handle to the cylinder position. Replace the lock when the handle is in the cylinder (slide out) position to prevent inadvertent operation of the pugmill motors.





- Remove the two 3/8 bolts from the back bearing plate of the pugmill. Disconnect the diverter springs from the box lift assembly.
- With the pugmill valve in neutral position, start the truck engine and engage the PTO.
- Slowly move the pugmill control valve to slide the pugmill gearbox/shaft assembly out of the pugmill case.
- **Disengage the PTO and turn the truck engine off.**



WARNING: DO NOT RUN THE MACROPAVER WITHOUT PROPER GUARDS IN PLACE. SERIOUS INJURY OR DEATH COULD OCCUR.



- Take a propane torch and heat the paddles and shafts until the slurry becomes soft or melted.
- Use a scraper and propane torch to clean the shafts, paddles and case of the pugmill.
- Now paddle condition can be checked. If paddle tip is worn and clearance between paddle tip and pugmill bottom is excessive (more than 6–8 mm), replace the worn paddle tip. Also, check condition of hardfacing on leading edge of the the rearward angled paddles on each shaft. If hardfacing is worn off, re-apply hardfacing in this area.